

CHOBE GAME LODGE

Chobe Riverfront, Chobe National Park



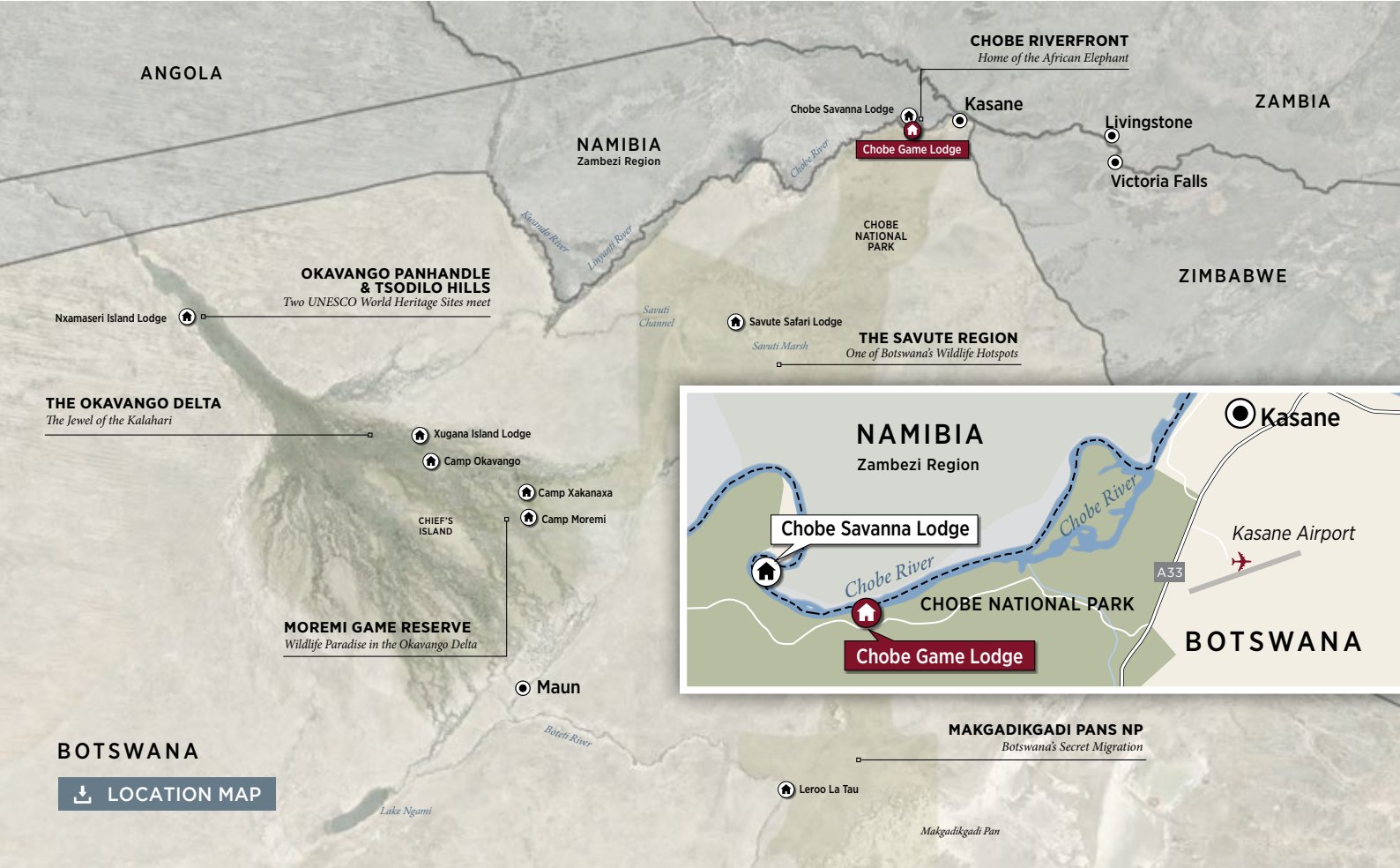
Empowering Botswana Through Tourism



www.desertdelta.com

CAMP OKAVANGO | NXAMASERI ISLAND LODGE | XUGANA ISLAND LODGE | CAMP MOREMI | CAMP XAKANAXA
CHOBE GAME LODGE | SAVUTE SAFARI LODGE | CHOBE SAVANNA LODGE | LEROO LA TAU

NOVEMBER 2021



[LOCATION MAP](#)

The only permanent game lodge situated within the famous Chobe National Park, Chobe Game Lodge is Botswana's premier venue for guests looking for a perfect base from which to explore the Chobe National Park and the Chobe River. This five-star Lodge is fully eco-tourism certified by Botswana Tourism Organisation.

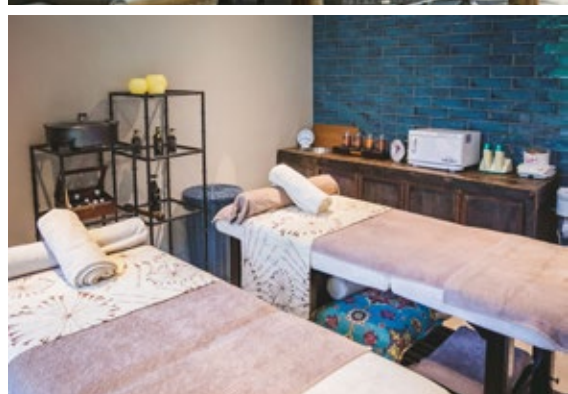


[LODGE LAYOUT](#)



THE LODGE FACILITIES

ROOMS	44 Rooms in total, accommodating a total of 94 guests: 22 Standard Rooms 12 Interleading Rooms 4 Triple Rooms 1 Family Room 3 Family Suites 1 Honeymoon Suite.
PILOT/GUIDE	1 Pilot/Guide Room (same standard as guest rooms).
RATES	Fully inclusive of all meals, scheduled safari activities, local drinks (including alcoholic drinks, excluding premium brands), park entrance fees and complimentary minibar fridge in each room.
DINING	Various indoor and outdoor dining locations.
SWIMMING POOL	In the main area of the lodge.
VIEWING DECK	Eco-friendly elevated River Boardwalk with several viewing decks for sundowners and private dining.
BAR	Tshwene Lounge and Cigar Bar with a Library, Billiard table and TV and Linyanti Cocktail Bar.
SPA	Beauty Salon and gym room.
CURIO SHOP	Accepts cash and credit card payments.
LAUNDRY	Daily, inclusive laundry service available.
WATER	Bottled Water.
ELECTRICITY	The lodges electric fleet of vehicles and part of the main lodge supply is powered by solar energy generated from the Lodge's solar field.
INTERNET	Complimentary Wi-Fi internet throughout the property.
TELEPHONE	The Lodge has telephone facilities.
CHILDREN	Accepts children of all ages. See Desert & Delta Safaris child policy for more information.
CORPORATE RETREATS	Chobe Game Lodge caters for small corporate retreats and incentive groups with conference facilities available. Please contact Desert & Delta Safaris for more information.



 LODGE IMAGES



ACCOMMODATION

Chobe Game Lodge can accommodate up to 94 people in total luxury. Each of the 44 rooms at the lodge are river-facing and air-conditioned, featuring overhead fans, complimentary mini bar, en-suite bathrooms and a private terrace. For those guests who desire the ultimate in exclusivity, the Lodge has four river-view suites, each with their own plunge pool and separate lounge area.

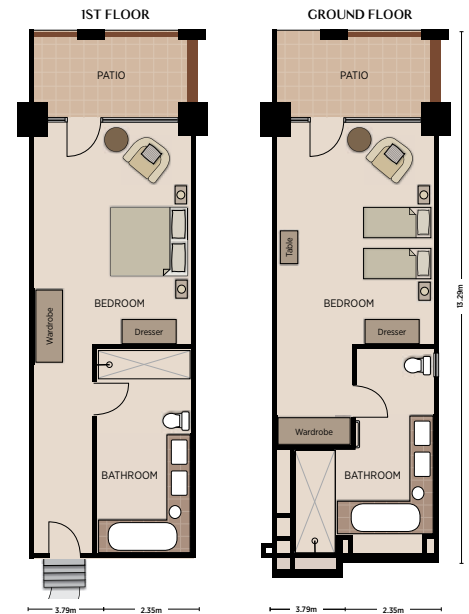


ROOM FACILITIES

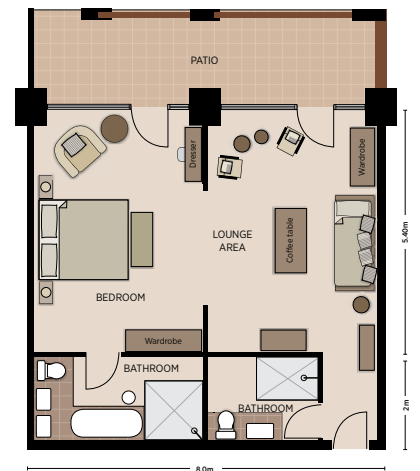
RIVER FACING	All rooms are river facing.
AIR CONDITIONED	All rooms are air conditioned.
EN-SUITE BATHROOM	En-suite showers and bath, hand basin & toilet facilities.
FANS	All rooms have fans.
POWER	220V multi adaptor plugs for charging photographic equipment.
SAFE	A small pass-code protected safe for storing valuables.
MINI BAR	Complimentary drinks.
UMBRELLA	In case of rain.
TELEPHONE	In each guest room for wake up calls and guest convenience.
HAIRDRYER	A small hairdryer is available in each room.
BATHROOM AMENITIES	A range of eco-friendly amenities are in each room.
TEA & COFFEE FACILITIES	A small kettle with tea and coffee is available.

 LODGE IMAGES

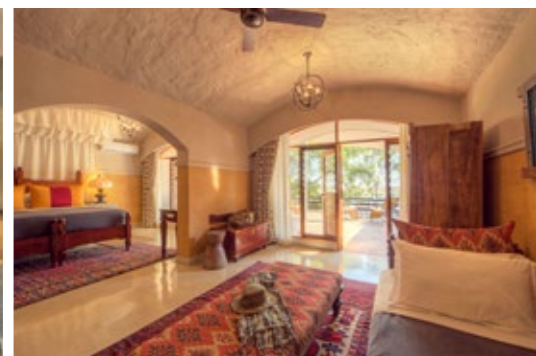
STANDARD ROOM



TRIPLE ROOM



 PLANS





↓ PLANS

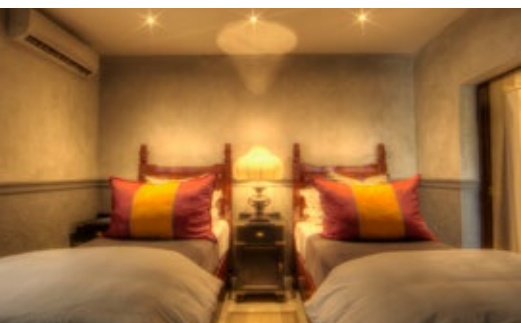
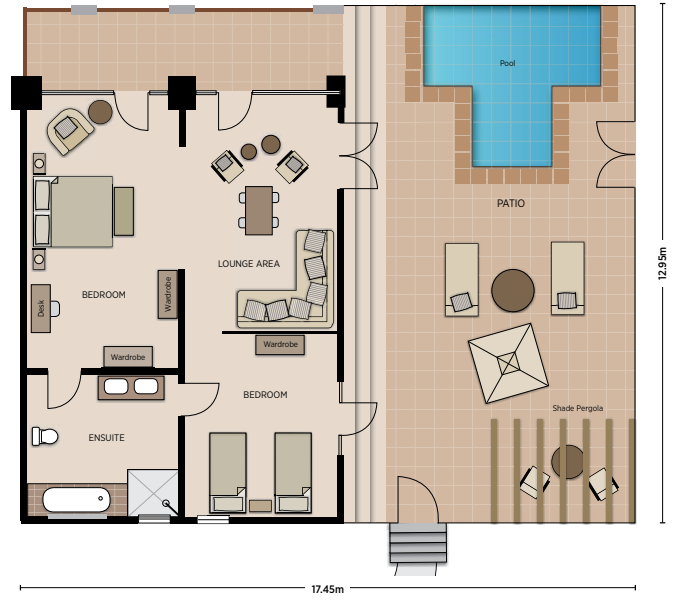
FAMILY ROOM



HONEYMOON SUITE







FAMILY SUITE





ACTIVITIES

Chobe Game Lodge offers a choice of both land and water safari activities, lead by Africa's first all female guiding team, allowing guests to experience the diversity of the Chobe Riverfront and the abundant wildlife that inhabits this region.

	CHOBÉ RIVER SAFARIS	Explore the Chobe River and the wildlife which frequent the waters-edge on mid-morning and afternoon river safaris on comfortable solar powered safari boats.
	GAME DRIVES	Enjoy morning and afternoon guided game drives in search of game within the Chobe National Park in open 4WD vehicles and converted electric 4WD vehicles.
	ECO TOURS	For those interested in a behind the scene's look at Chobe Game Lodge, join the midday eco tour which takes a look at the sustainable tourism initiatives implemented at Chobe Game Lodge.
	CULTURAL EXCURSIONS	For guests staying four nights or more, enjoy a heartwarming trip to Kazungula Children's Ark for the opportunity to give back and learn more about the Batswana culture.

 EXPERIENCE IMAGES

 LIVE WEBCAMS



ECO SAFARIS

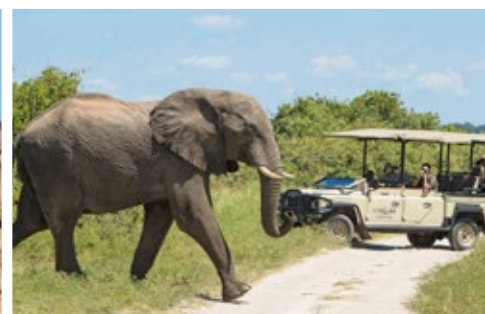
Our ever growing fleet of electric vehicles and boats provide a superior safari experience while reducing our carbon footprint



TYPICAL DAY ON SAFARI

Please note the below suggested daily program is flexible based on the guests interests, travel times and availability of activities.

WINTER TIMES	SUMMER TIMES	ACTIVITY
05:00	04:30	Early morning wake-up call.
05:30	05:00	Tea, coffee, rusks, muffins, fruit and a selection of fruit juices are served in the main public gathering area in front of Linyati Bar.
06:00	05:30	Leave for morning activity, (approximately 3 – 4 hours).
	07:30	Breakfast is served in the dining area.
	11:00	Optional mid morning Chobe River safari.
	12:30	Lunch is served in the dining area.
SIESTA TIME		Relax and enjoy the lodge facilities and surroundings.
	15:00	Afternoon tea is served on the open air patio.
	15:30	Depart for afternoon activity (approximately 3 hours).
18:30 - 19:00		Arrive back at the lodge.
	19:00	Dinner is served in the dining area.





ACCESS TO CHOBE GAME LODGE

Upon arrival in Kasane from either international or scheduled flights, guests are met by a Chobe Game Lodge representative and transferred by road to Chobe Game Lodge. The portion from Kasane Airport to Sedudu Gate (entrance to Chobe National Park) is on a tarred road, the remainder of the transfer inside the Chobe National Park is on a sand road suitable for 4WD vehicles only. Total transfer time from Kasane Airport to Chobe Game Lodge is approximately 45 minutes.

ACCESS FROM VICTORIA FALLS & LIVINGSTONE

Chobe Game Lodge is approximately 90-minutes by road from Victoria Falls and Livingstone airports.

Maun

ESTIMATED FLIGHT TIMES Between Camps & Airports

25	Camp Okavango					
30	5	Xugana Island Lodge				
20	10	10	Camp Moremi / Camp Xakanaxa			
40	30	25	25	Savute Safari Lodge		
30	45	45	40	50	Leroo La Tau	
60	35	35	45	60	90	Nxamaseri Island Lodge
70	60	60	55	30	65	95 Kasane

Guests connecting to Chobe Game Lodge on a Desert & Delta Safaris circuit will fly to or from Kasane airport and transferred by road to the lodge, please take note of the above transfer times.

PLEASE NOTE: Drone use is strictly prohibited at Chobe Game Lodge and inside the Chobe National Park, in accordance with National Park laws of Botswana.

CHOBEGAME
GAME LODGE
IN THE CHOBE NATIONAL PARK - BOTSWANA
EST. 1973



Empowering Botswana Through Tourism

RESERVATIONS OFFICE

TELEPHONE [+267] 680 1494
E-MAIL info@desertdelta.com

View Desert & Delta Safaris Video

www.desertdelta.com

MARKETING OFFICE

TELEPHONE [+267] 686 1559
E-MAIL marketing@desertdelta.com
ADDRESS Private Bag 310,
Maun, Botswana